



COMPANY PROFILE

YOUR GATEWAY TO A BETTER VIEW

CONTENTS

Welcome message	3
Our history	3
Timeline	4
Affiliations	5
Vision & mission	6
Values	7
Our products	8
Our services	12

H SYSTEMS (PTY) LTD



WARREN MUNRO

Chief Executive Officer

As Chief Executive Officer, Warren Munro has pioneered the brand's evolution and unprecedented success. As a driven entrepreneur with a long-term vision, Mr. Munro's years of experience in the aluminium industry has set new benchmarks, positioning him as an internationally-recognised individual. His extensive knowledge has led to the development of a unique set of specialized sales skills, which he uses to confidently inspire his local operations. Mr. Munro's success as a CEO bears testament to his passion and work ethic as well as his ability to nurture a team worthy of an industry-leading company.

OUR HISTORY

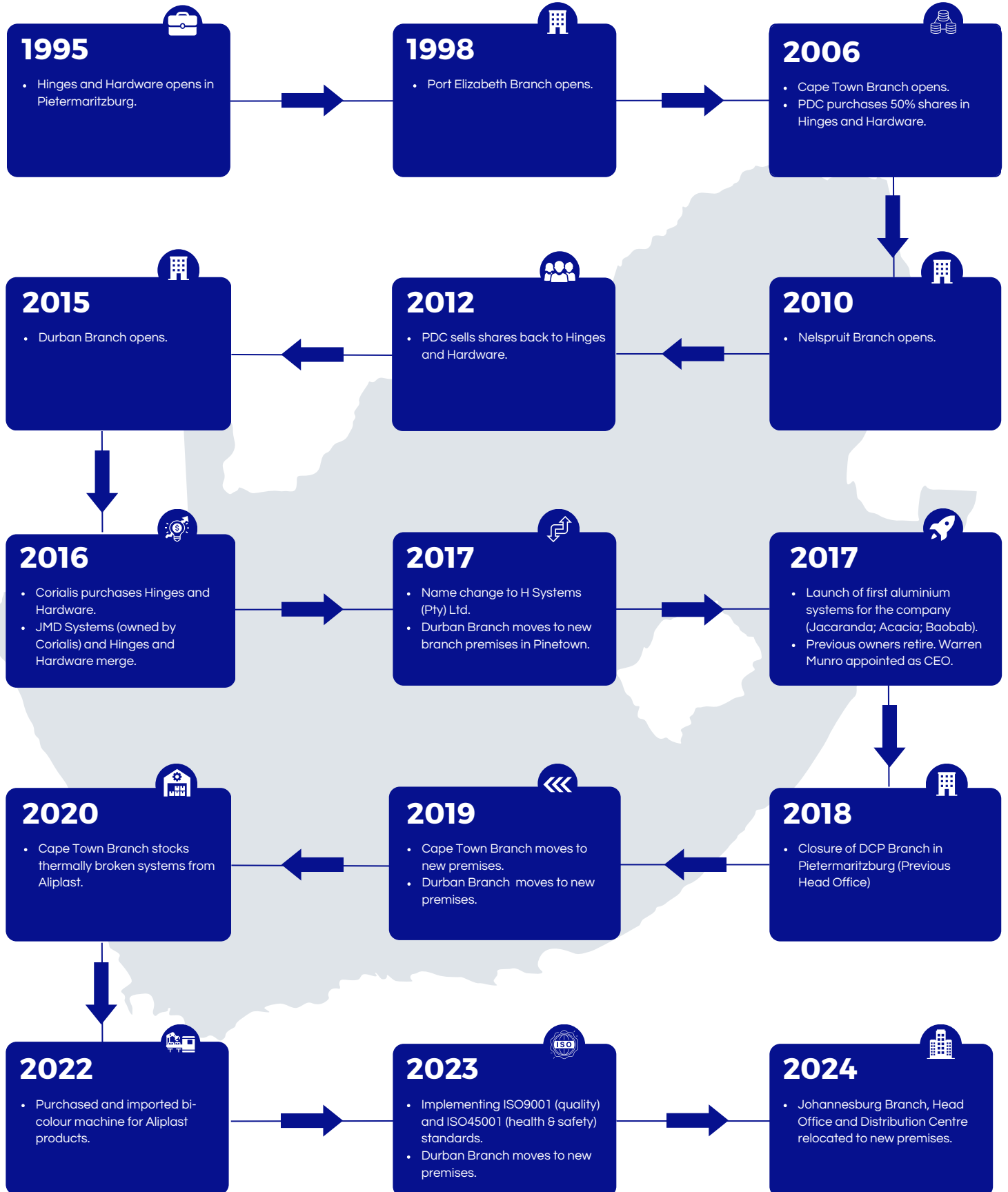
H Systems (Pty) Ltd, previously known as Hinges and Hardware (Pty) Ltd, was established in 1995 in Pietermaritzburg, South Africa. Over the years, the company has established itself as a leading service provider in the distribution industry of aluminium profiles, systems, and accessories for windows, facades, and doors.

In 2016, H Systems was acquired by Corialis, a leader in the design and manufacturing of high-quality, technologically advanced aluminium profile systems. Corialis (Core Innovative Aluminium Integrated Solutions), was founded in 1984 as a family-owned company in Lokeren, Belgium. Thanks to their successful vertical integration strategy, Corialis has grown into a Pan-European leader with facilities around the world, including production plants in Belgium, France, United Kingdom, Poland, Reunion Island, South Africa, Serbia, Portugal, Spain, and Germany.

The headquarters of Corialis are located in Lokeren, Belgium, and the company is active in the extrusion, insulation, coating, and distribution of high-quality aluminium profile systems to thousands of local fabricators and installers throughout Europe.

With over 25 years experience in the industry, H Systems continues to provide its customers with excellent products and service.

TIMELINE



AFFILIATIONS



Corialis

aliplast[®]
ALUMINIUM SYSTEMS

Aliplast Aluminium Systems

smart
architectural aluminium

Smart
Architectural Aluminium



Profils Systems

 **lingote**
aluminios

Lingote Aluminios

 **Systems**

JMD Systems



Centroalum


GUTMANN

Gutmann Group

 **ORGADATA**
A CLICK AHEAD

Orgadata



Bizmantools

 **AAAMSA**
Group

AAAMSA Group

VISION & MISSION

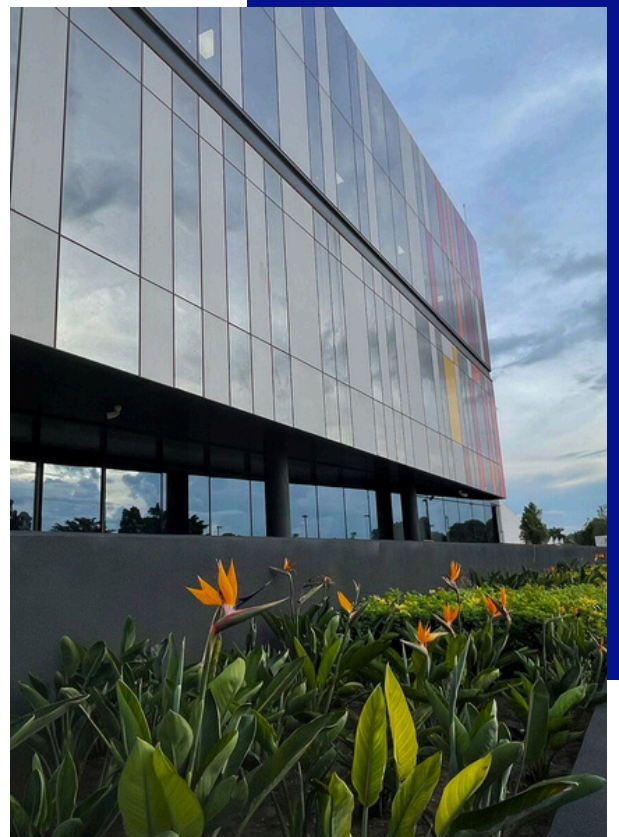


OUR VISION

At H Systems, our vision is to excel as the leading provider of innovative aluminium systems solutions in Southern Africa, setting the standard for excellence in our industry.

OUR MISSION

At H Systems, our mission is to be a vital partner in delivering exceptional value-added services and state-of-the-art aluminium systems solutions to our clients, helping them to achieve their goals and succeed in their respective industries.



OUR VALUES



QUALITY

At H Systems, we aim to provide top-quality aluminium systems and accessories and provide excellent service to customers. Our goal is to build long-lasting partnerships with customers through consistent, reliable performance and a culture of innovation and excellence.



PASSION

At H Systems, we are passionate about our brand, customers, and employees. Our drive for delivering high quality service stems from our passion for the company. We aim for customer success and satisfaction, fostering a culture of passion for excellence, and continuous improvement. We constantly strive to innovate.



RESPONSIBILITY

At H Systems, we accept responsibility and are accountable to customers, colleagues, and communities. We aim to make a positive impact and lead by example. We commit to be a sustainable and responsible aluminium supplier and promote a culture of health and safety.

OUR PRODUCTS

WHAT WE OFFER

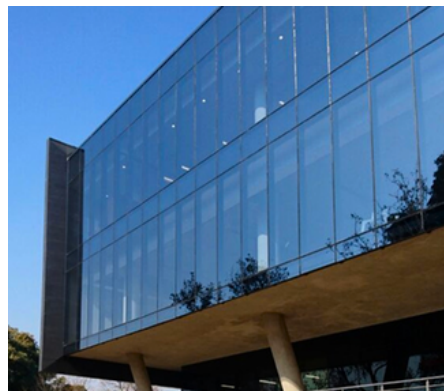


Modern buildings require the design and construction of fenestration systems with high standards. By focusing on the specifications and the requirements of the most advanced markets worldwide, our high-quality systems meet the most stringent demands in terms of comfort, energy, security, architectural design, and energy-efficiency. H Systems complies with The Association of Architectural Aluminium Manufacturers of South Africa (AAAMSA) design standards.



HERITAGE BY H SYSTEMS

H Systems Heritage range of products are suitable for residential buildings, upmarket residences, lodges, estates, etc. This range can also be used in commercial applications. The range includes H Shopfronts, H Casement Systems, Zenith Sliding Window, Heavy Duty Slider, Patio Sliding Door System, and Sliding Folding Door.



CUSTODIAN *Collection* BY H SYSTEMS

H Systems Custodian range of products is suitable for residential and commercial buildings which is suitable for upmarket residences, lodges, estates, shopping complexes, malls, office blocks, hospitals, etc. The range includes Curtain Walls, Window and Door System with multiple opening possibilities with inward glazing functionality, Sliding Door/Window System, and H Clad.



aliplast[®] ALUMINIUM SYSTEMS

All products based on these profiles are 100% made in Belgium which is characterized by their high strength, thermally broken systems for high end application and design. Systems are light, rigid and stable, which makes it ideal for creating large-size glazing. The wide application of Aliplast profiles makes it possible to use them in both residential and commercial buildings.

HERITAGE RANGE

H CASEMENT SYSTEMS

H Systems' Heritage range offers modern, energy-efficient, and low-maintenance aluminium casement systems for residential and commercial buildings in various sizes and colours at great value.

ZENITH SLIDING WINDOW

The H Systems Zenith Sliding Window is a modern and affordable solution for domestic and commercial properties. It offers easy access locking, ultra-smooth rollers, energy efficiency, weather resistance, and exceptional functionality and security.

H SHOPFRONT

H Shopfront is an affordable system that encloses and secures store openings with various configurations, providing a practical solution for maintaining an attractive retail entrance.

HEAVY DUTY SLIDER

Heavy Duty Slider is a versatile sliding door system with unique profiles, wide interlocker options, and can accommodate large sizes. Ideal for commercial and residential buildings, it's available in various finishes, including special colour powder coating.

SLIDING FOLDING DOOR

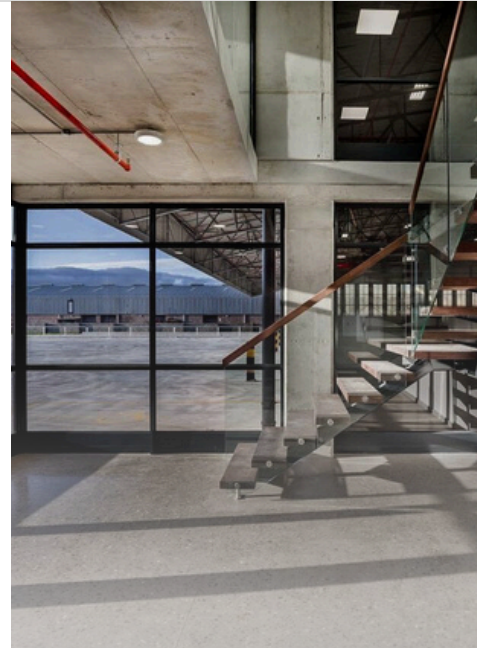
H Systems sliding folding door is a multi-panel door that can fold and slide in the same direction or split into two units. They're popular for creating large openings and commonly used in restaurants or patios. Available in various colours, including custom powder coating.

PATIO SLIDING DOOR SYSTEM

The Patio Sliding System has minimal framing for larger views and is ideal for tight spaces. It's a trusted domestic system with optional locks and night locks. It comes in mill finish, anodized, and powder-coated finishes, with special colours available.

HERITAGE HARDWARE

H Systems' Heritage range provides a comprehensive selection of hardware, including various handles, locks, hinges, and other accessories for generic systems. With a wide range of options, this range is a valuable investment for any project. PVC gasket range available, with the option to utilize EPDM/ Santoprene gaskets.



CUSTODIAN COLLECTION

JACARANDA CURTAIN WALL

The Jacaranda system is a versatile, high-performance curtain wall for commercial facades, available in pressure or flush glazed styles. It meets industry standards and offers design flexibility, and vent options.

BAOBAB WINDOW & DOOR SYSTEM

The Baobab casement is a non-insulated European system, offering versatility with inward glazing, multiple opening options, and various sash and mullion configurations, all while maintaining an aesthetic appeal.

ACACIA SLIDING DOOR & WINDOW SYSTEM

The Acacia sliding system includes a cavity slider with optional sun shading and louvres. It supports single to multi-slider setups, and track extensions.

CLS250

The CLS250 is a cutting-edge window and door system, offering both sliding and lift-and-slide capabilities. The CLS250 is a Non-insulated European system with beads on the inside and multiple add on tracks.

DECO WALL

The Deco Wall aluminum cladding complements modern architectural designs with its simple click system, offering four vertical and one horizontal profile.

H SECTIONS

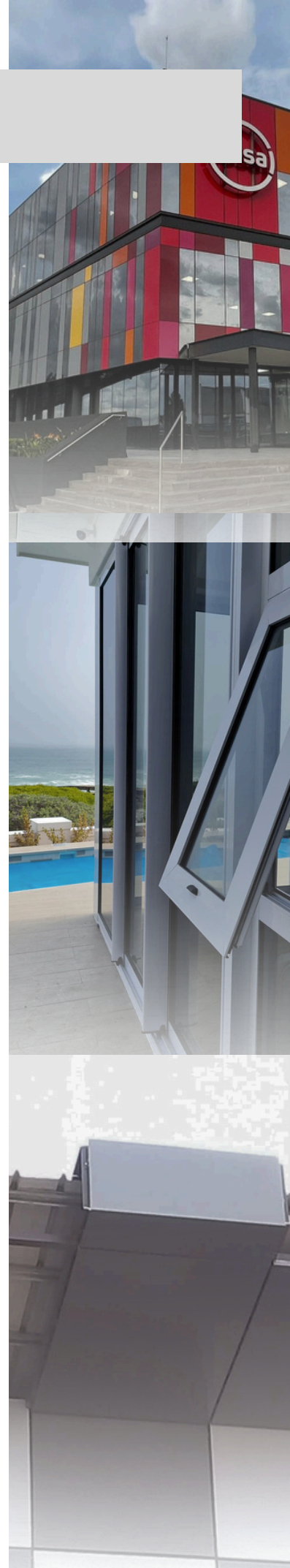
H Sections profiles are compatible with the Heritage Range engineering sections, ideal for fabricating pergolas, sun shading, gates, and flush-glazed features.

H CLAD

H Clad panels have two 0.5mm aluminum sheets with a fire-rated core. They offer low maintenance, thermal and acoustic insulation, UV resistance, and a B1 fire rating.

FLYSCREEN MESH

H Systems Stainless Steel Flyscreen Mesh is a durable 316 stainless steel with a powder-coated finish. It keeps out bugs, mosquitoes, and larger animals like baboons and monkeys, providing long-lasting protection.



ALIPLAST ALUMINIUM SYSTEMS

FUTURAL

Futural is a versatile and thermally efficient 3-chamber system that meets European insulation standards. It works with fixed frames, side-hung or tilt-in windows, and inward/outward opening doors. The system features 3 chambers, straight/bent glazing beads, approved profiles, and comes in numerous powder coating finishes. It's a great option for modern construction projects.

ULTRAGLIDE

Ultraglide is a sophisticated and versatile sliding system for large dimensions, offering a complete corner opening and easy maintenance. It's ideal for people with reduced mobility and an ergonomic solution for public buildings. The system has a 3 chamber design, locks from Sobinco or Hautau, and a range of powder coating finishes. It's available in mono-, duo-, and 3-rail options, with a low threshold and max light, and has an opening angle of 90° or 180°.

VG500

VisoGlide 500 is a versatile and universal sliding system that can transform your spaces. It comes in mono-, duo-, and 3-rail options, sliding and lift-slide system, with a low threshold, max light, and an opening angle of 90° or 180°. The system has a 3 chamber design and hardware options from Sobinco/Hautau. It's SKG burglary certified and available in numerous powder coating finishes with a variety of colours and finishes.

PANORAMA

A Panorama folding wall is the ideal way to separate or connect inside and outside. In good weather, the Panorama offers an ideal way to experience the outdoor ambience. During bad weather, the Panorama forms the perfect barrier against the elements to ensure a comfortable experience.

INFINITY

Infinity is a premium sliding window and door system ideal for new residences or renovations. It has a 3-chamber design, narrow 30mm mullions, and uses clamp glazing with EPDM seals. It supports a maximum pane weight of 150kg and comes in various design options with multiple powder coating finishes.



OUR SERVICES



DRAUGHTING

H Systems offers draughting services for medium to large architectural manufacturers. We have a team of draftsmen who can produce technical plans and drawings based on the architect's plans and client specifications. The service is flexible and can be tailored to meet the specific needs of residential and commercial projects. Our service offering includes digitizing existing plans, preparing shop-drawings for architectural approval, compiling documentation, and submitting as-built drawings in a packaged format for clients to review. H Systems aims to become an effective B2B model.



ESTIMATION

Our comprehensive estimating services and software empower our clients to effortlessly generate accurate quotes for their customers and precise cutting lists for their production facilities with a single click. Our sophisticated software is designed to streamline the estimation process, eliminating manual errors and saving valuable time and resources for our valued customers.



RESEARCH & DEVELOPMENT

Our technical department, comprising of highly skilled and experienced professionals, is engaged in ongoing development of innovative systems and technical solutions that are tailored to meet the evolving needs of our valued customers. Our team stays up-to-date with the latest advancements to ensure that we can provide our customers with the most reliable and efficient solutions in the aluminium industry.



CUSTOMER TECHNICAL SUPPORT

At H Systems, we prioritize our customers' satisfaction by providing unwavering support throughout their manufacturing journey. Our dedicated technical support team is committed to delivering exceptional service, offering comprehensive assistance and training to help our customers make informed decisions when selecting the most suitable product or service tailored to their specific needs. Furthermore, our punchtools are carefully crafted to simplify the manufacturing process, ensuring ease of use and increased efficiency, allowing our customers to achieve their production goals seamlessly.

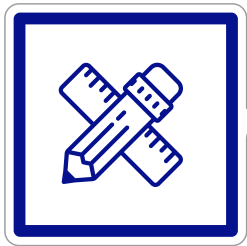
Contact our Technical Department on 011-748 2660 or technical@hsystems.co.za for any assistance or further information on the available service.

OUR SERVICES

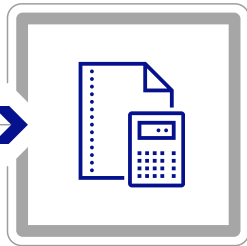
BIZMANTOOLS ESTIMATING SOFTWARE

H Systems (Pty) Ltd has partnered with Bizmantools, in developing user-friendly software which offers our valued customers a digital platform to do the following:

bizmantools



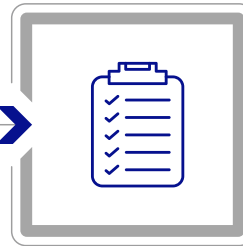
Designing



Estimating



Quoting



Cutting List



Purchase Orders

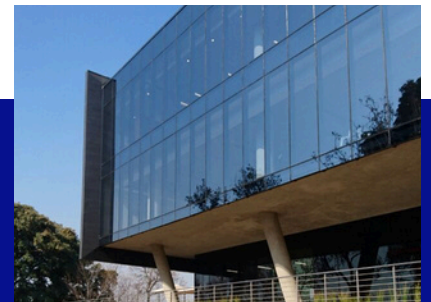
Bizman quoting enables our valued customers, to produce quotes for their customers and cutting lists for their production facilities at the touch of a button! The feature-packed product helps manage quality and profitability whilst ensuring all work produced is NHRBC (National Home Builders Registration Council) compliant.

H Systems has identified our customers' needs with regards to cutting and estimating and encourage all our valued customers to enquire through our Technical Department (technical@hsystems.co.za), how to get Bizman Life and take their businesses to the next level.



HERITAGE BY H SYSTEMS

A range of generic systems consisting of various non-insulated doors, windows, fixed panels, fixed and ventilated louvre systems.



CUSTODIAN Collection BY H SYSTEMS

A range of specialized systems exclusive to H Systems consisting of thermally improved double-glazed curtainwall, non-insulated windows, doors, fixed glazing, and cladding systems.

OUR SERVICES

Window, door and curtain wall manufacturers plan and produce their products with LogiKal. LogiKal takes the user safely and efficiently through the entire process. It has never been so simple to design, estimate and produce doors, windows and curtain walls of all types and all sizes. LogiKal opens up direct and intuitive paths towards your goal.



WHY LOGIKAL:

- User friendly interface.
- Personalized one on one training.
- Ongoing database updates.
- Instant help through remote support.
- Smart Measure app.
- Regular on site visits.
- Cloud solutions.
- Integration with external software.
- Information sharing & collaboration.
- Individual digitalized production.

FEATURES:

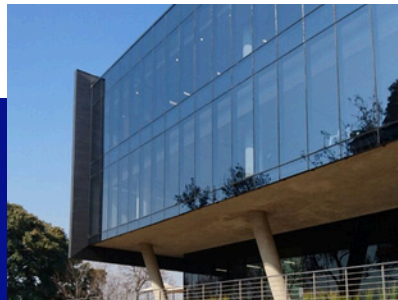
- Element Input.
- Quotation.
- Shop drawings.
- Fabrication.
- Material optimization.
- Reporting.
- Custom hardware libraries.
- Construction with CAD.
- CNC integration.
- AutoCAD & Revit plugin.



HERITAGE

BY H SYSTEMS

A range of generic systems consisting of various non-insulated doors, windows, fixed panels, fixed and ventilated louvre systems.



CUSTODIAN Collection

BY H SYSTEMS

A range of specialized systems exclusive to H Systems consisting of thermally improved double-glazed curtainwall, non-insulated windows, doors, fixed glazing, and cladding systems.



aliplast

ALUMINIUM SYSTEMS

A range of European systems imported from Belgium, comprising of thermally broken and non-insulated doors, windows and fixed panels.

PAINT & FINISHING



H Systems (Pty) Ltd has formed partnerships with different established powder coaters to provide the necessary paint and finishing services to all architectural manufacturers. H Systems and our partners offer tailored powder coating solutions to meet the specific requirements of different projects.

Powder coating architectural aluminium profiles have various benefits, including, but not limited to:

- Solvent free – No V.O.C (Volatile Organic Compounds) emission.
- Low fire hazard risk.
- Waste powder can be recycled.
- Increased durability of finishes on the final product.
- Superior corrosion resistance acting as a barrier to corrosive chemicals and moisture.
- Superior chemical resistance.
- Superior heat resistance and specifically developed for elevated temperatures.
- Superior abrasion and scratch resistance.
- Powders are formulated to withstand high impact.
- Superior quality finish.

Our flexible services mean that we can tailor make a powder coating solution to meet the specific needs of your projects.

Powder Coating specifications available:

- Various finishes (matt, gloss, or satin).
- Various classifications (D1001, D1025, D1036 & D2525).
- Various colours.
- Akzo Nobel or Ferro product categories.

Powder coating has a lead time of between 10 – 15 working days.

PAINT OPTIONS



Black (BE)



Charcoal (CH)



Bronze (BZE)



White (WE)



Silver (SE)



Natural
Anodised



Mill



Bespoke
Colours

Our Footprint



Gauteng (Johannesburg)

206 R23 Road, Bredell Ext 26,
Kempton Park, Gauteng, 1619
+27 11 748 2660

Western Cape (Cape Town)

Unit 2, Corner of Buttskop Road & Range Road,
Kwela Park, Blackheath, Cape Town, 7581
+27 21 905 0005

KwaZulu-Natal, EThekweni (Durban)

Unit 11, Vision Business Park, 5 Tottum Rd,
Cornubia, Ethekeeni, 4001
+27 31 569 2275

Mpumalanga, Mbombela (Nelspruit)

Unit 2, Glassfit Building, 8 Stinkhout Crescent,
Nelspruit, Mpumalanga, 1201
+27 13 752 7565

Eastern Cape, Gqeberha (Port Elizabeth)

11 Nicoll Road, Korsten, Gqeberha,
Eastern Cape, 6001
+27 41 451 1642

Technical Department

206 R23 Road, Bredell Ext 26,
Kempton Park, Gauteng, 1619
+27 11 748 2660
technical@hsystems.co.za

Debtors Department

+27 33 386 1422/24

